

## About the Garden

The Jubilee Garden is a Community Garden for everyone to enjoy. Schools, charities and social groups are welcome to use the garden for outside learning, social activities and events e.g. artists and photographers will find a wealth of inspiration from the variety of plants and unusual materials used.

Why not have treasure hunts? There are lots of places to hide things here!

## Learning Outside the Classroom

People of all ages, abilities and stages of development can find a stimulating environment in the garden, beyond the confines of a classroom.

If you look beyond the plants and use your imagination, all the basic subjects can be studied here!

## Learning Activities - suggestions:

Counting - How many circles, squares and triangles can you find?

Are there any other shapes here?

What colours can you see?

What materials have been used in the garden?

Are they natural or man-made?

Can you think what else they might be used for?

Find and count the animal and bird houses

Describe how the textures feel.

Look in the pond, what might live here?

What do bees and insects do?

Which way is the wind blowing?

## Onchan Jubilee Garden Royal Drive, Onchan (opposite the boating lake)

**Opening Hours:** The garden is open every day of the year. The entrance gate is unlocked but we would prefer you to use the garden between 9am and 8pm to avoid disturbance to people living nearby. Please close the gate when you leave.

**Admission is free.**

### **Garden Regulations:**

- Dogs are permitted but must be kept on a lead. Please clean up after your dog.
- Bicycles are not allowed.
- Playing of music is not allowed except by prior arrangement with Onchan Commissioners.

## **Creation of the Garden**

The garden was funded by Onchan Commissioners and from generous sponsorship of sensory features from companies and individuals. Their names are listed on the Sponsor board at the entrance.

**The Jubilee garden was designed by Tony Elder and built by**



## Welcome to Onchan Jubilee Garden!



The Onchan Jubilee garden was developed to provide a vibrant outdoor space that can be enjoyed by all members of the local community and visitors to Onchan and the Isle of Man.

The Jubilee garden is a Sensory garden designed to stimulate all your senses through a variety of plants, materials and innovative garden design.

The garden is accessible to people with limited mobility with wide paths and open areas in which to relax or explore.

## Explore the Sensory Garden

2012 is Olympic year and the garden has been designed using the 5 Olympic rings, one for each sense, plus a Wildlife ring. The garden has been designed to encourage interaction with its features. **Now go explore!**

**Hearing** Sounds are created by movement of plants and water. What causes plants to move? Shake the plants here to make a noise! What animals can you hear in the garden? Listen to the water falling, make sounds with the metal pipes.

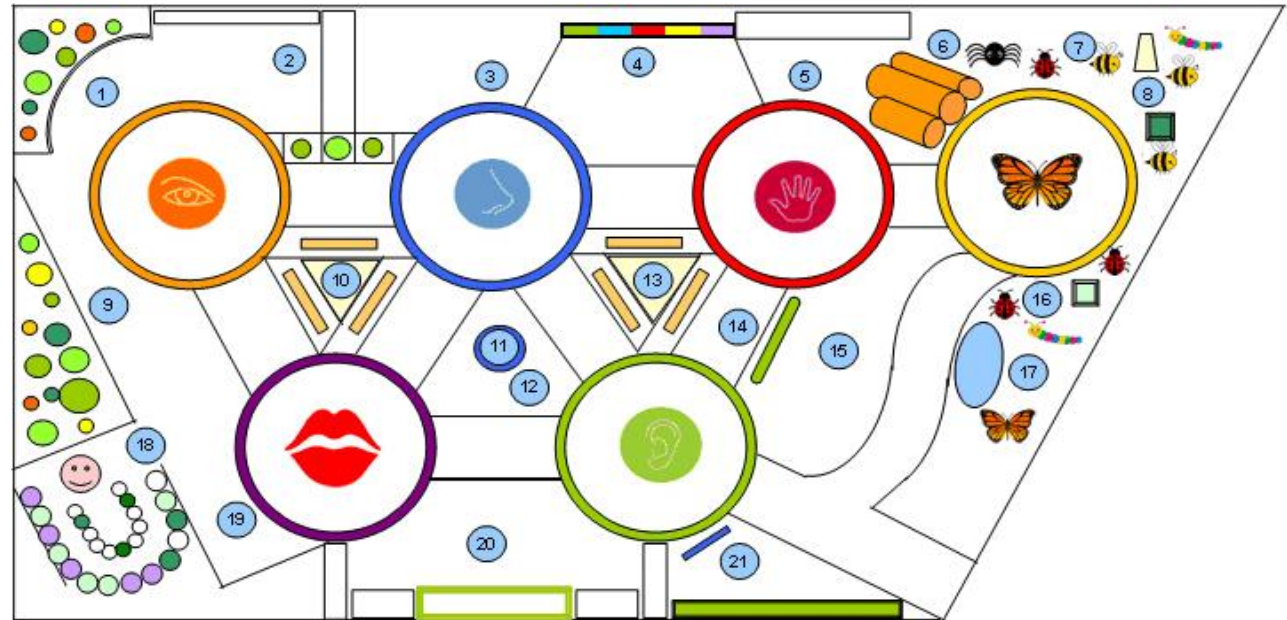
**Taste** Many plants are POISONOUS and will make you ill if you eat them. Herbs, vegetable and fruit grow here - you can taste the leaves and fruit from the labelled plants only. Some are sweet, others are sour or sharp. Describe how they taste.

**Sight** Learn about the form, colour and texture of plants and materials. Tall, short, big, small. Look at flower and leaf shapes and sizes. Close your eyes and describe the plant to your friends.

**Smell** Lots of plants have a smell, some from flowers, and others from their leaves. Plants produce smell to attract pollinators like bees. A sense of smell helps you taste things. Which one is your favourite?

**Touch** We use our fingers to touch things and describe how they feel. Rough, smooth, furry, spiky. The texture panel has different things to touch and describe. The plant bed here has lots of plants with different textures. Do you have a favourite plant?

## Onchan Jubilee Garden Plan



1.	Sight Zone - plants of all shapes, sizes and colours	8.	Bird table and beehive compost bin	15.	Soft play area
2.	Activity work table and object wall	9.	Onchan Guides and Brownies plant bed	16.	Bug box - lift the lid and look inside
3.	Smell Zone - scented flowers and leaves	10.	Windssock - learn about wind speed and direction	17.	Wildlife pond home for beetles and tadpoles
4.	Texture wall, touch and feel the different materials	11.	Olympic torch water feature	18.	Outdoor classroom and picnic area
5.	Touch Zone - touch the leaves, furry, rough smooth, spiky	12.	Beach garden with driftwood, ropes and cobbles	19.	Taste Zone - edible plants, fruits and vegetables
6.	Log pile insect home and crawl pipes	13.	Flag and wind chime pole	20.	Wheelchair accessible raised garden bed
7.	Wildlife plants to attract butterflies and bees	14.	Hearing Zone - what sounds can you make?	21.	You are here!